



# UNDERSTANDING DOG BODY LANGUAGE



## ACTIVE INFLUENCE

- Demands attention in a very active way, such as jumping up, barking at you, and mouthing or nipping

**Requires a combination of active and passive training**



## PASSIVE INFLUENCE

- Engages you by staring at you for a pat, nudging or licking you, or dropping things at your feet to get you to play

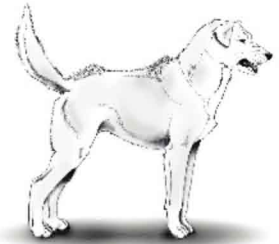
**This subtle behavior requires passive training**



## ASSERTIVE/AGGRESSIVE

- Exhibits staring, raised hackles and stillness
- Can become aggressive if you approach him or make sudden movements

**Requires careful training**



## ASSERTIVE/OVERLY CONFIDENT



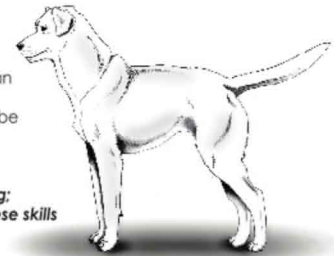
- Very confident, with tail held high
- Uses both active and passive influence to get what he wants

**Requires careful training to prevent him from becoming Assertive/Aggressive**

## ALERT/SELF-ASSURED

- Focuses more on his environment than on you
- His intense focus on distractions can be hard to break

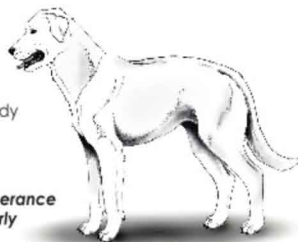
**Very smart and good at problem-solving; needs training that allows him to use these skills**



## RELAXED/MIDDLE OF THE PACK

- Relaxed posture; his whole body appears to wag
- Lives to please, easygoing

**Prone to over-exuberance if not trained properly**



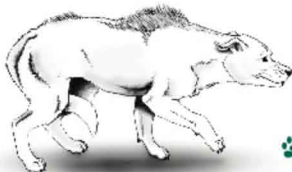
## FEARFUL/AGGRESSIVE



- Appears stressed, always on edge
- Tends to bark, lunge and growl at the slightest movement or noise; potential biter

**Craves safety and needs confident, consistent leadership through appropriate training**

## FEARFUL/NERVOUS



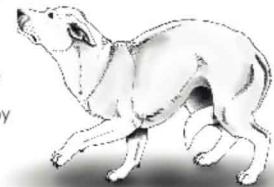
- Often sleeps with one eye open
- Always seems anxious and worried; constantly darts his eyes
- Sudden movement or noises cause him to bark, then retreat under a table or sofa

**Requires careful training to prevent him from becoming Fearful/Aggressive**

## SHY/SUBMISSIVE/TIMID

- Shy; will often turn his body sideways when greeting people or dogs
- Shies away from being petted by strangers

**Wants to please and is usually fairly easy to train**



Please use this information as a general guide. Contact a professional to discuss your individual dog's body language.

© WYGC Bark Busters Pty Ltd. All Rights Reserved

